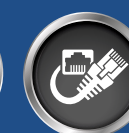
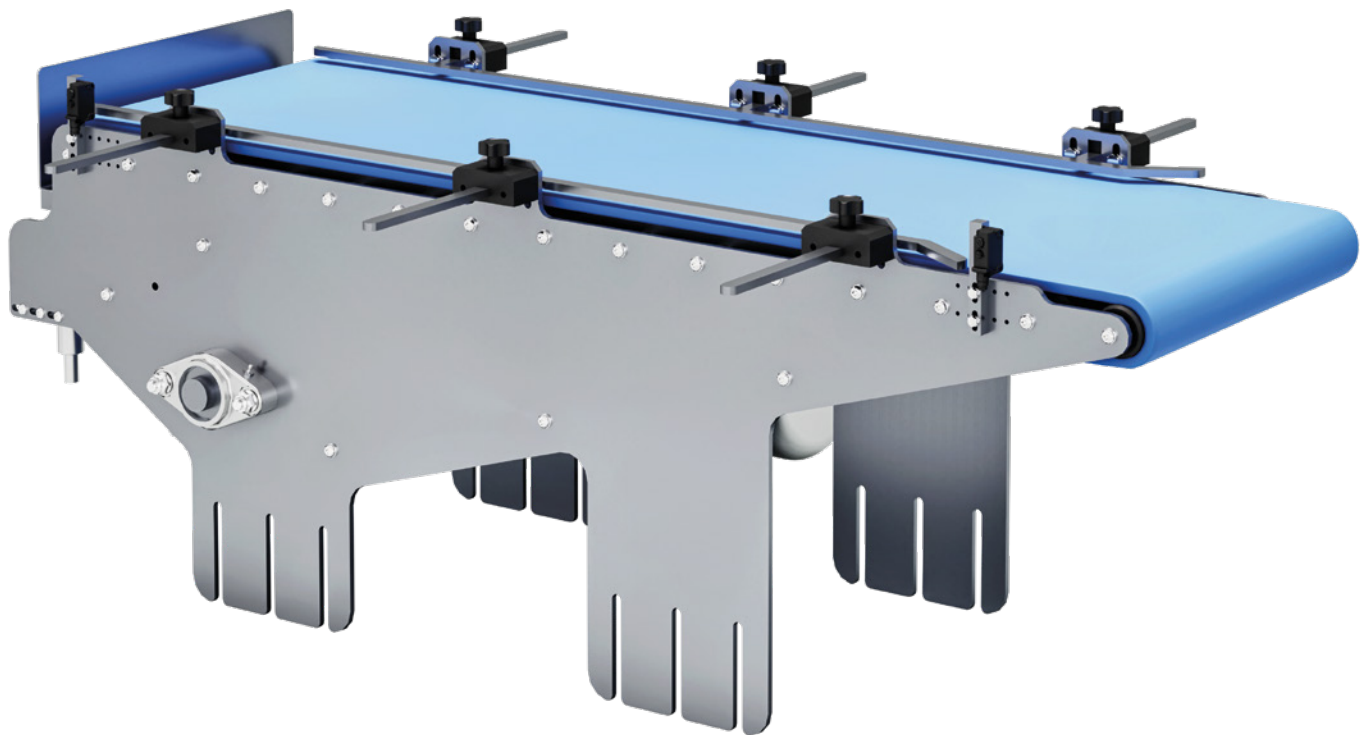


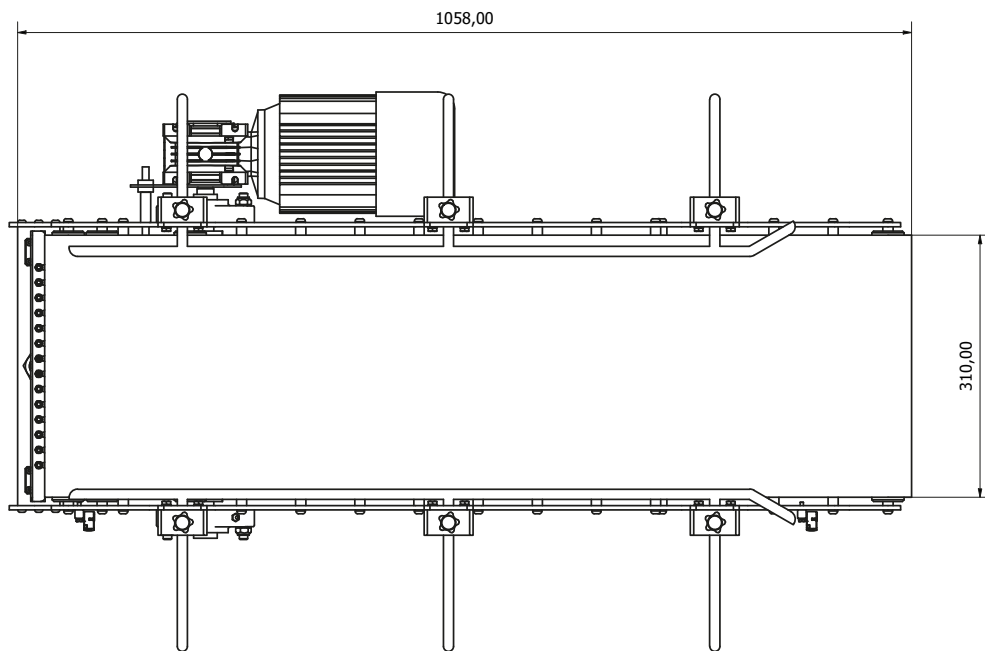
# NS



### Main features

- Modular belt.
- Brushless motor and drive board, speed up to 70 m/min.
- Working temperature: from 0 °C to + 40 °C.
- Power supply: 230 Vac (Hz 50/60).
- Maximum power: 1,1 kW.
- Structure and carpentry in aluminum and stainless steel.
- Machine management by PLC.
- Electrical panel with mushroom and reset.
- Pneumatic barrier system for product accumulation.

### Layout





**MODULAR AND INTEGRABLE**

**REDUCED MAINTENANCE COSTS**

**SELF-DIAGNOSTIC**

**CONNECTIVITY AND DATA SHARING WITH OTHER SOFTWARE**

**REMOTE ASSISTANCE**



 TECHNOLOGY for Your Business

R.S. Bilance S.r.l.  
Via Rinaudo, 19, Valcorrente - 95032 Belpasso CT  
Tel. +39 095 352328a3  
[commerciale@rsbilance.com](mailto:commerciale@rsbilance.com)  
[www.rsbilance.com](http://www.rsbilance.com)

