

## Technical data sheet

---

### RS SERVER

#### Data exchange management software Machines vs Remote PC

##### PRODUCT DESCRIPTION

The software application makes it possible to work on the master data database (PLU), customers and traceability, with the option of sharing this information with all connected machines; it also automatically acquires and stores all processing data from them.



##### MAIN FEATURES

---

- Up to 10 machines of the same model can be connected, and they can also be managed individually
- Creation, modification and deletion of the master data database (PLU), customer and traceability, with the option of sharing this information with any connected machines
- Automatic acquisition and storage in a single database of all weighings made by the connected machines
- Extensive analysis of the weighing log with possible customisable reports related to time references (by date or period) and up to three filters to choose from in the data saved, possible export of the report to the desired location (local, network or USB port)
- Logging of data received, thus allowing the data to always be available in the archive and a light application execution
- Export of data in Excel format (.csv)
- Multilingual selection
- Standard RS Balance communication protocol

**MINIMUM PC REQUIREMENTS**

Intel® Core™ i3 - 8 GB RAM  
 1 GB of free disk space  
 64-bit operating system Windows 7 or higher version  
 Monitor with minimum resolution 800x600  
 Internet access

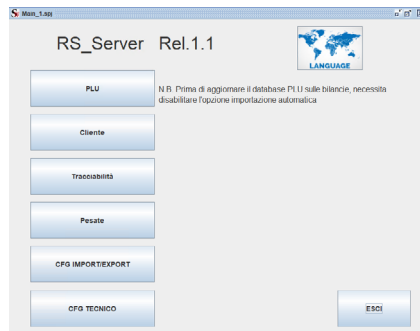


Figure 1 Main interface

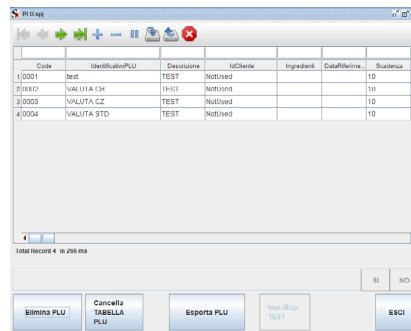


Figure 2 Dynamic devices interface

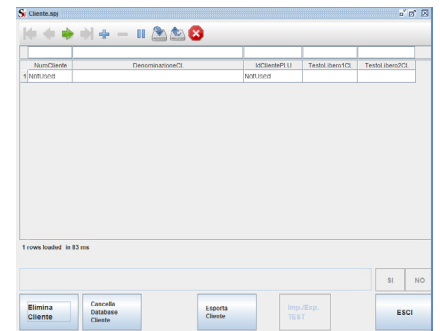


Figure 3 Times management interface

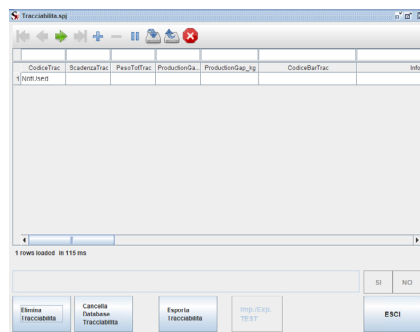


Figure 4 Batches management interface

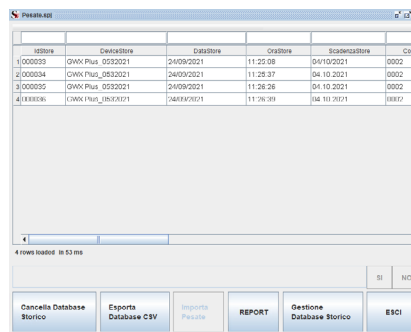


Figure 5 Dynamic devices interface

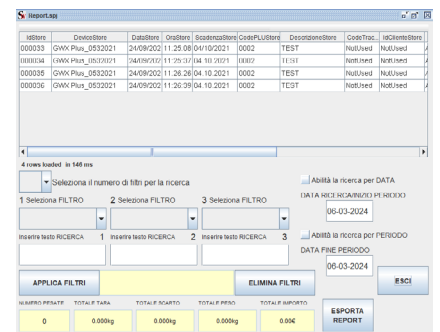


Figure 6 Weighing parameters configuration interface

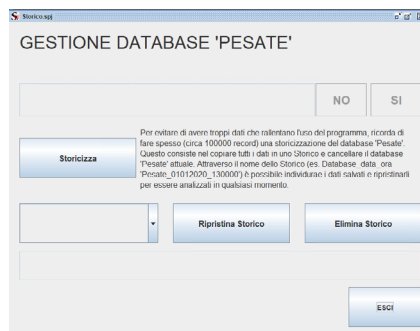


Figure 7 Reports interface

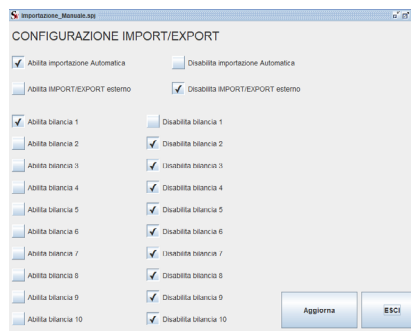


Figure 8 Graphs creation interface

