

Data sheet

LABEL SERVER

Software for remote management of print and apply machines

PRODUCT DESCRIPTION

The software application makes it possible to work on the PLU database that configures the machine parameters according to product characteristics, while all the information to be printed is managed on the Variables database, both databases can be shared with the connected machines, and it automatically acquires and stores all processing data from them. An interface acting as a remote control panel is available for each connected machine.



MAIN FEATURES

- Connection with up to 10 labelling machines, AS2 Plus and NT SAP, with the possibility for each one to display the connection status (green LED on: labelling machine connected, black LED: labelling machine disconnected)
- An interface is available for each connected machine, which supports all features provided by the Standard RS Bilance communication protocol, machine status and all remote controls for PLU selection, Variables selection, machine start and stop, printers on and off, etc.
- PLU database management with product settings (code, description, speed, delays and application parameters), with the option of transmitting the entire database or only the desired PLUs, to all connected machines or only to certain ones
- Variables database management with the information to be printed (code, description, label name and associated variable information), with the option of transmitting the entire database or only the desired Variables, to all connected machines or only to certain ones
- Receives and groups all the information of the processing performed by the connected machines (sequential number, machine ID, processing data and time, code and description of the item with variables, printer used, label name and variable information associated with it)
- Standard RS Bilance file sharing system
- Fully configurable database import and export operations
- Logging of data received, thus allowing the data to always be available in the archive and a light application execution
- Multilingual selection

MINIMUM PC REQUIREMENTS

Intel® Core™ i3 - 8 GB RAM
 1 GB of free disk space
 64-bit operating system Windows 7 or higher version
 Monitor with minimum resolution 800x600
 Internet access



Figure 1 Main interface

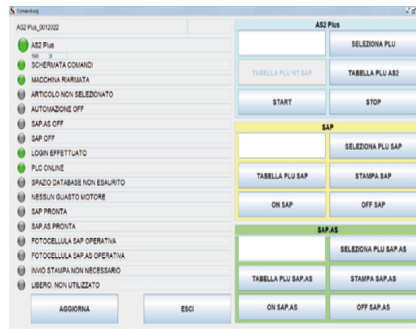


Figure 2 Remote AS2 Plus control panel interface

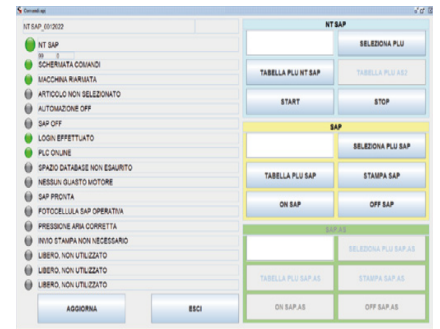


Figure 3 Remote NT SAP control panel interface

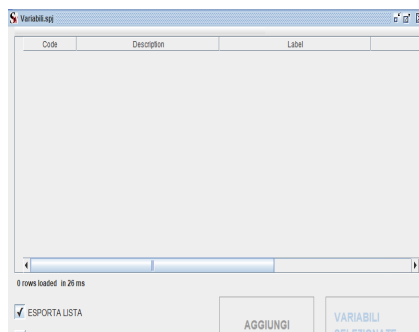


Figure 4 Variables management interface

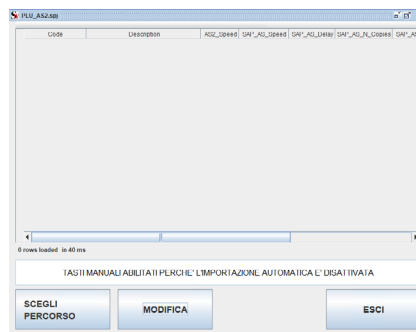


Figure 5 PLU management interface

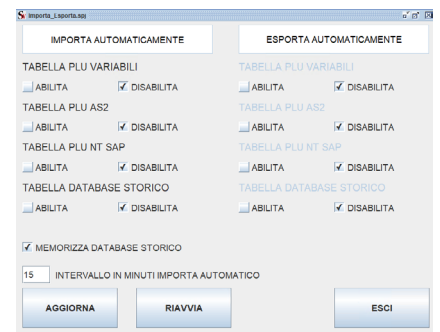


Figure 6 Import/Export operations configuration interface

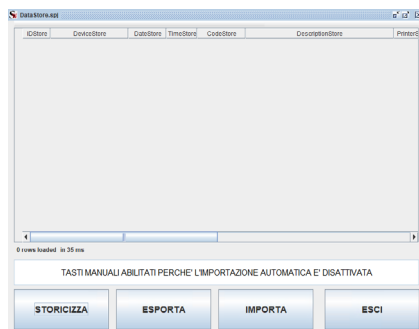


Figure 7 Processing log interface

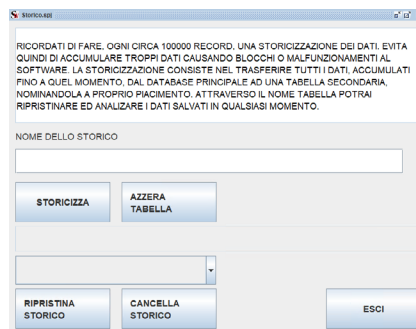


Figure 8 Data logging interface

