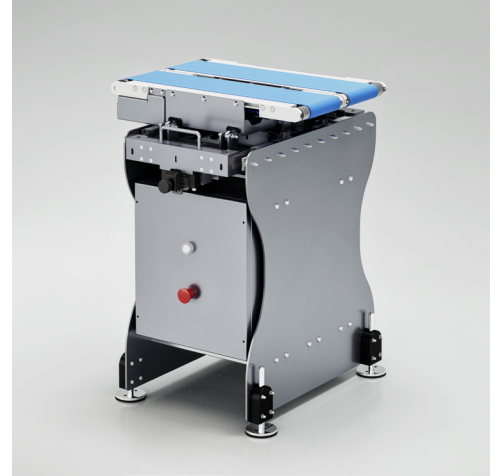


Data sheet

AL 500

PRODUCT DESCRIPTION

Aligning light signal.



MAIN FEATURES

- Cadences up to 120 ppm
- 2 motorized closed loop belts, 230, 275 and 320 mm width
- 2 brushless motors and drive boards, speed up to 70 m/min
- Working temperature: from 0°C to +40°C
- Power supply: 230 Vac (Hz 50/60)
- Maximum power: 1 kW
- Structure and carpentry in aluminum and stainless steel
- Machine management via PLC
- Electrical panel with mushroom and reset



Le specifiche tecniche e le immagini possono essere soggette a miglioramenti e modifiche senza preavviso.

